

Live Streaming Cameras Whitepaper



Executive Summary

The live streaming market is expanding beyond traditional indoor settings into outdoor, commercial, and industrial applications. This growth has created a significant demand for **stable, durable, and easy-to-use** streaming equipment that is accessible to all. The current market presents two key challenges:

1 The Professional Barrier: Broadcast-level cameras and systems are prohibitively expensive and complex, locking out many creators and businesses.

2 Consumer Device Limitations: Smartphones and webcams suffer from short battery life, overheating, and unstable quality, making them unsuitable for prolonged or outdoor use.

To bridge this gap, Foscam introduces a dual-product solution: **the L8M (Indoor Streaming Camera)** and the **LD8EP (Outdoor Streaming Camera)**. This lineup delivers professional-grade stability at a consumer-friendly price point, enabling seamless live streaming from the living room to the great outdoors. Our core value proposition is providing an all-in-one solution that is "**Ready to Stream, Built to Last, and Adaptable to Any Environment.**"



Introduction

The Evolving Landscape of Live Video

Live video is no longer confined to gaming and influencer content. It has become a critical tool for **e-commerce, remote work, online education, tourism promotion, and remote monitoring**. Audiences and operators now demand more than just a signal; they require **high-definition, reliable, and continuous** video feeds that build trust and engagement.

This shift reveals a "device gap"—a lack of equipment that balances ease of use, unwavering stability, and environmental ruggedness, particularly for emerging "always-on" and unattended applications.

Join millions streaming on YouTube, Facebook, and Twitch



Contents

1. Market Pain Points and User Challenges

1.1 The "High Wall" of Professional Gear-----	P1
1.2 The "Low Ceiling" of Consumer Devices-----	P1
1.3 The "Device Vacuum" in Emerging Applications-----	P3

2. The Foscam Solution

Dual-Product Strategy for Total Coverage -----	P3
--	----

3. Product Deep Dive and Application Scenarios

3.1 L8M: Your All-in-One Indoor Streaming Studio-----	P4
3.2 LD8EP: The Unblinking Eye on the Outdoor World-----	P5

4. Conclusion and Call to Action

We invite you to join the next generation of live streaming-----	P7
--	----

5. Appendix: RTMP Live Streaming Setup Guide

Step 1: Open RTMP Settings-----	P9
Step 2: Obtain Stream Information from Your Platform -----	P9
Step 3: Enter the Information in the App -----	P10

6. Examples from Major Platforms

YouTube Live-----	P11
Twitch -----	P11

1. Market Pain Points and User Challenges

1.1 The "High Wall" of Professional Gear

High Cost: Professional cameras, lenses, capture cards, and encoders represent a significant investment.

Technical Complexity: Users require knowledge of settings like aperture, shutter speed, ISO, and focus, as well as audio mixing.

High Maintenance: Complex setups have multiple points of failure and often require dedicated personnel for operation and troubleshooting.



1.2 The "Low Ceiling" of Consumer Devices

Poor Stability: Phones and laptops are prone to overheating, crashing, and performance drops during long sessions.

Limited Scenarios: Reliance on Wi-Fi or cellular data, combined with limited battery life, makes them ineffective for outdoor or fixed installations.

Lack of Specialization: Consumer devices lack features critical for professional streaming, such as active cooling, robust weatherproofing, and stable wired connectivity.

Why Choose Foscam LD8EP for Streaming?

	
 \$ 200~300	 Over \$1000
 24/7 continuous. Always on, always streaming.	 Few hours.
 IP66-rated, rainproof & dustproof.	 Not waterproof, unsuitable for outdoor use in rain/snow.
 Stable POE connection + low-heat live-streaming sensor for 24/7 reliability.	 Overheating & unstable connection limit performance.
 One-time setup, remote control.	 Constant battery & signal checks. Remote operation is not allowed.

1.3 The "Device Vacuum" in Emerging Applications

Scenarios like **24/7 city skyline streams, wildlife observation, farm monitoring, and unattended tourism feeds** require equipment that is both easy to deploy and capable of operating reliably without constant human intervention. The market has lacked a dedicated, cost-effective solution for this space.

2. The Foscam Solution

Dual-Product Strategy for Total Coverage

Our two-camera ecosystem is designed to provide the right tool for any streaming scenario, eliminating the compromise between quality, cost, and complexity.

Feature	L8M (Indoor Streaming Camera)	LD8EP (Outdoor Streaming Camera)
Core Positioning	Professional indoor creation & communication	All-weather, persistent outdoor streaming
Connectivity	Dual-Mode: WiFi & Ethernet for flexible indoor setup	Power over Ethernet (PoE) for single-cable power & data, ensuring maximum reliability
Durability	Optimized for indoor heat dissipation	IP66 weatherproof Operating Temperature: -20°C ~40°
Typical Use Cases	Live commerce, online courses, video conferencing	Cityscapes, tourism, farms, wildlife observation
Core Value	Extreme Ease of Use, eliminating complex setups	Set-and-Forget Reliability in harsh environments

Shared Advantages

- Remote control
- Consumer-friendly price
- 24/7 continuous operation
- Professional-grade stability
- Hands-free operation, enabling "unattended" streaming

3. Product Deep Dive and Application Scenarios

3.1 L8M: Your All-in-One Indoor Streaming Studio

The L8M is designed for creators, educators, and businesses who need a high-quality, hassle-free indoor solution.

● Key Features:

Connection Freedom: Choose between the flexibility of Wi-Fi or the rock-solid stability of a wired Ethernet connection.

True Plug-and-Play: Stream within minutes of unboxing. No extra hardware or software drivers are needed for most applications.

Crisp Image Quality: Deliver sharp and vibrant video in 4K resolution.

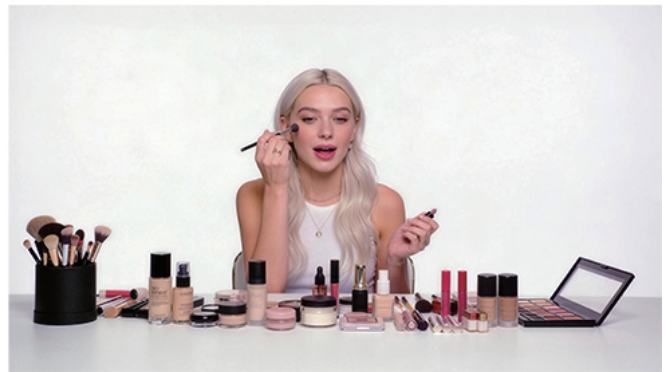


● **Application Scenarios:**

E-commerce Streamers: Quickly set up a professional-looking product showcase stream from a home office or studio.

Remote Teams: Serve as a superior-quality dedicated webcam for video conferences, enhancing corporate professionalism.

Online Educators: Easily conduct engaging and high-fidelity virtual classes.



3.2 LD8EP: The Unblinking Eye on the Outdoor World

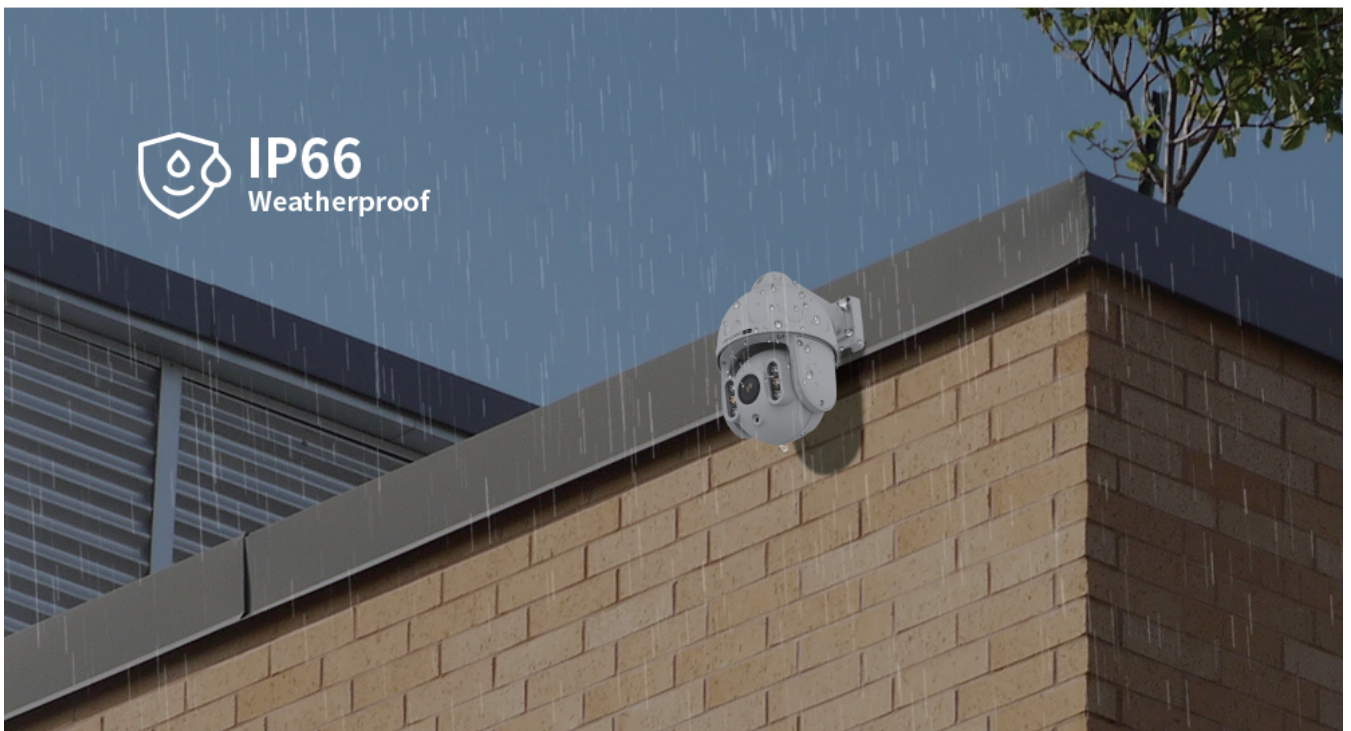
The LD8EP is engineered for mission-critical outdoor streaming where reliability is non-negotiable.

● **Key Features:**

Ultimate Stability via PoE: The Power over Ethernet design is its cornerstone. A single cable provides both power and a stable internet connection, solving the core challenges of outdoor power sourcing and unreliable Wi-Fi.

Rugged Construction: Built with a high IP rating for water and dust resistance, capable of operating in challenging weather conditions.

Designed for Unattended Use: The ideal "set it and forget it" solution for continuous, long-term streaming projects.



● **Application Scenarios:**

Cityscape & Tourism Slow TV: Mount on buildings or in parks to provide 24/7 live feeds of urban life and scenic spots.

Agricultural & Aquaculture Monitoring: Allow consumers or managers to remotely view livestock, crops, or facilities, building transparency and trust. **Wildlife & Nature Observation:** Conduct non-intrusive monitoring of animal behavior in zoos or natural reserves.



4. Conclusion and Call to Action

Foscam addresses a critical market gap with the L8M and LD8EP. We have demystified high-quality, stable live streaming, making it an accessible tool for every creator, business, and organization—not just a privilege for a few.

We invite you to join the next generation of live streaming:

For indoor creators, choose the L8M and experience the simplicity of professional streaming.

For outdoor projects, choose the LD8EP and establish a live stream that never sleeps.

To learn more about technical specifications and product details, please visit our official websites: www.foscam.com and www.foscamlive.com.

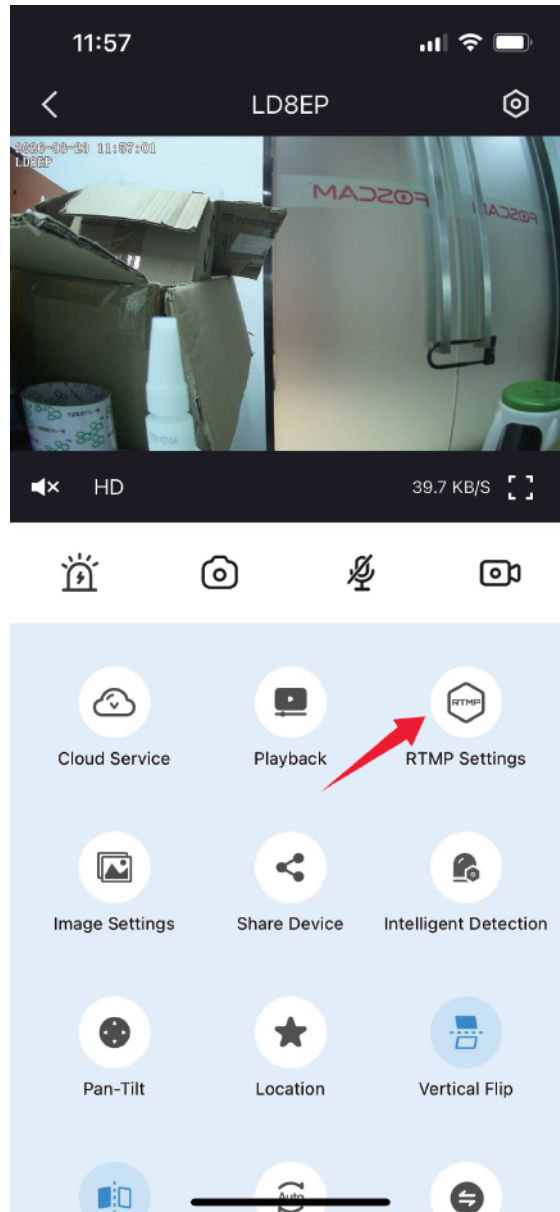


5. Appendix: RTMP Live Streaming Setup Guide

This section provides a quick guide for setting up live streaming from your camera to major platforms such as **as YouTube, Facebook, and Twitch**.

Step 1: Open RTMP Settings

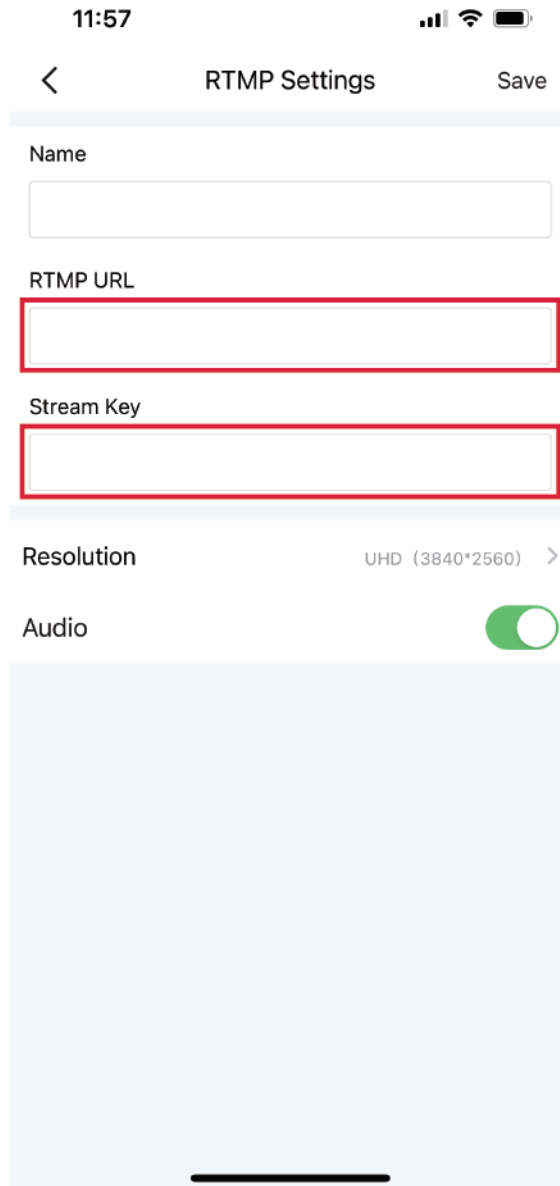
Open the **Foscam App** and go to your device's **Live View** page. Tap **RTMP Settings** to enter the streaming configuration page.



Step 2: Obtain Stream Information from Your Platform

Go to your preferred live streaming platform (e.g., YouTube, Facebook, or Twitch). Locate the RTMP URL and Stream Key for your channel.

Note: The naming may vary between platforms – some may use terms like “Live broadcast URL” and “Live broadcast code.”



Step 3: Enter the Information in the App

Copy the **RTMP URL** and **Stream Key** from your platform.

Paste them into the corresponding fields in the **App's RTMP Settings page**. Tap **Save** to apply the settings.

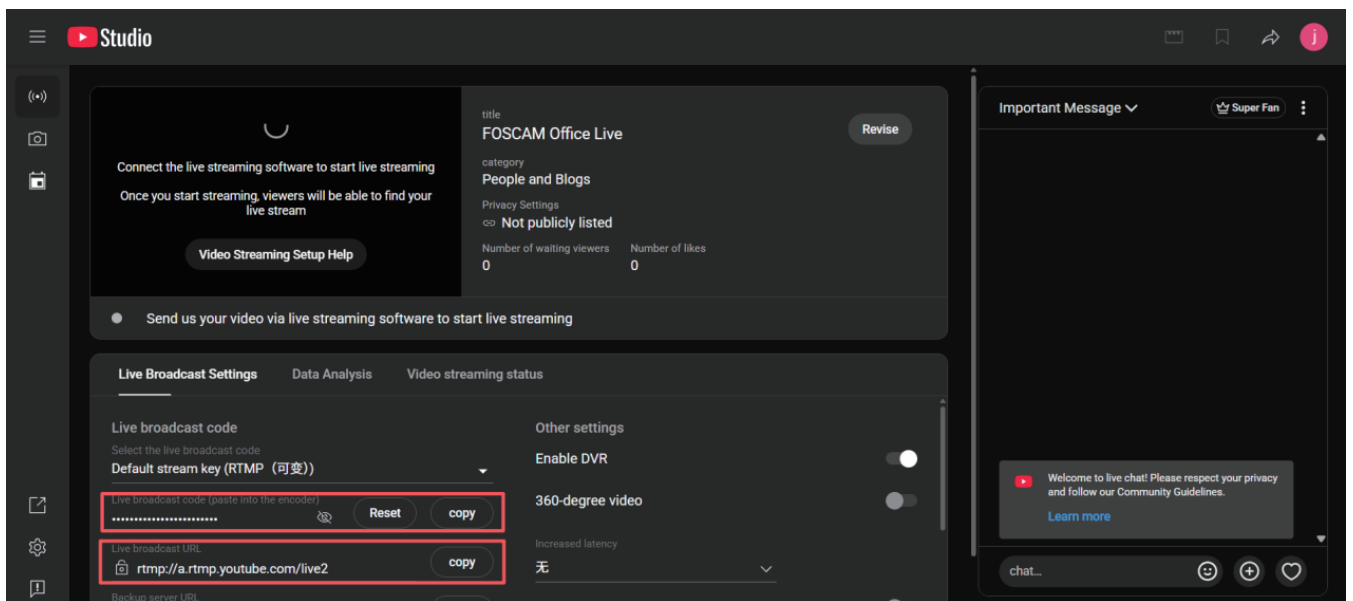
Your camera is now ready to start streaming live to your selected platform.

Important: Some platforms (such as **Facebook**) do not grant RTMP streaming access to all accounts. Please make sure your account has RTMP live streaming permission before setting it up.

6. Examples from Major Platforms

YouTube Live

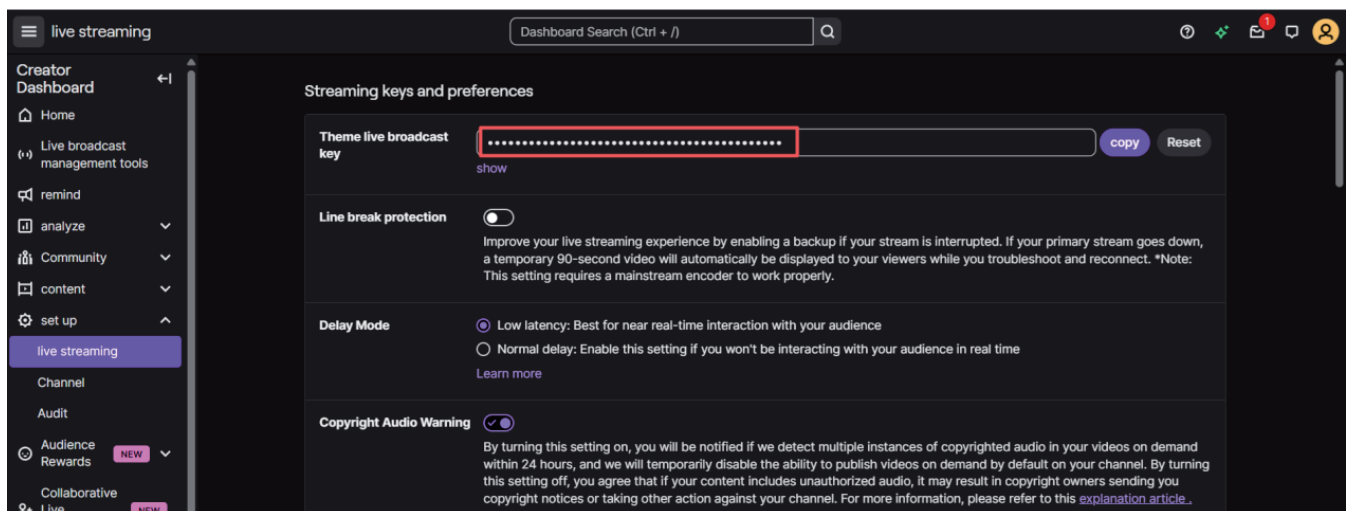
Go to YouTube **Studio** → **Go Live** → **Stream** → **Stream Settings** Find your **Stream URL** and **Stream Key**



Twitch

Twitch's RTMP server address is fixed and usually does not need to be changed. (Default RTMP URL: `rtmp://live.twitch.tv/app/`)

Go to **Creator Dashboard** → **Set up** → **live streaming**
Locate your **live broadcast Key**



We sincerely appreciate your time in reviewing this whitepaper. Should you have any questions or require further technical clarification, please do not hesitate to contact our team. We look forward to the opportunity to support your live streaming endeavors and to building a successful partnership with you.



Shenzhen Foscam Intelligent Technology Co., Ltd.

Address: Room 902, Building 1B, Shenzhen International Innovation Valley,
Xingke 1st Street, Nanshan District, Shenzhen, Guangdong, China, 518055



Sales E-mail: sales@foscam.com



Support E-mail: support@foscam.com